

Kyrie

Moderato

♩=70

Piano introduction in 3/4 time, key of D major. The right hand features a melodic line with eighth and sixteenth notes, while the left hand provides a harmonic accompaniment with chords and moving lines.

8

Vocal entry in measure 8: Ky - ri - e, e - le - i - son. Ky -

Piano accompaniment continues with a steady eighth-note pattern in the right hand and a more active bass line in the left hand.

14

Vocal continuation: - ri-e, Ky - ri - e, e - le-i-son, e - le - i - son. Ky - - ri-e, e -

Piano accompaniment continues with a steady eighth-note pattern in the right hand and a more active bass line in the left hand.

21 **Più mosso**

le-i-son, e - le-i-son. Chri-ste, e - le-i-son. Chri-ste, e - le-i-son. Chri-ste, e-le-i-

Più mosso

29 **Andante**

son. Ky - ri - e, e - le - i-son. Ky - ri - e, e - le - i-son.

Andante

34 **f**

f Ky - ri - e, e - le - i-son, e - le - i - son.

Gloria

♩=90 Basi

et in ter - ra pax ho - mi - ni - bus bo - nae

♩=90

10 vo - lun - ta - tis. La - uda - mus te, be - ne - di - ci - mus te, a - do - ra - mus te, glo - ri - fi -

19 Alti

ca - mus te, gra - ti - as a - gi - mus ti - bi pro - pter ma - gnam glo - ri - am tu - am,

♩=90 Stiriglasno

27 S.T. De - us Pa - ter o - mni - po - tens.

Do - mi - ne De - us, Rex coe - le - stis, De - us Pa - ter o - mni - po - tens. Do - mi - ne Fi - li
De - us Pa - ter o - mni - po - tens. Do - mi - ne

De - us Pa - ter o - mni - po - tens.

37 S.

u - ni - ge - ni - te, Je - su Chi - ste, Do - mi - ne De - us,
Fi - li u - ni - ge - ni - te,

44 T.B.

Fi - - - li - us Pa - tris,
A - gnus De - i, Fi - li - us Pa - tris,
Fi - li - us Pa - tris,

50 Bas S.A.

qui to-llis pe - cca - ta mun - di, mi -
su-sci-pe de - pre-ca-ti-o-nem

59 Ten. S.A.

se-re-re no - bis; qui to-llis pe - cca - ta mun - di, su - sci-pe de-pre-ca-ti-o-nem
su-sci-pe de - pre-ca-ti-o-nem

68 no-stram. Bas S.A.

no-stram. Qui se - des ad dex-te-ram Pa - tris, mi - se - re - re no - bis.

77 S.T. Tutti unis. 4 glasno

Quo-ni-am tu so - lus San - ctus, tu so-lus Do-mi-nus, tu so-lus Al - ti-si-mus, Je-su Chri-ste, cum

84 in glo - ri - a

San - cto Spi - ri - tu: in glo - ri - a De - i Pa - tris, in glo - ri - a in glo - ri - a in glo - ri - a

89 De - i Pa - - tris. *f* *ff*

De - i Pa - - tris. *f* *ff*
De - i in glo - ri - a De - i Pa - tris. A - - men.
De - i in glo - ri - a De - i Pa - tris.

Sanctus

S.A.

San-ctus, San-ctus, San - ctus, San- ctus Do-mi-nus De-us Sa-ba- ot.---

7 T.B.

S.A.

Ple-ni- sunt. Coe-li et ter-ra glo - ri-a tu - a. Ho - sa - - a - -

Vsi enoglasno

S.A.T.B.

rall. - - - - -

rall. - - - - -

Benedictus

Largo ♩=60

S.A.

in no -

Be-ne-dic - tus, qui - ve - nit in

Largo ♩=60

7 - mi-ne S. T.B.

no-mi-ne Do-mi - ni. Be-ne - dic - tus, qui ve - nit in no - mi-ne Do-mi - ni. Ho - san -

14

na, ho - san - na, ho - san - na in ex - cel - sis.

21 S.A.

ho - san - na in
Ho - san - na, ho - san - na, ho - san - na in ex - cel - sis.

Agnus Dei

Moderato

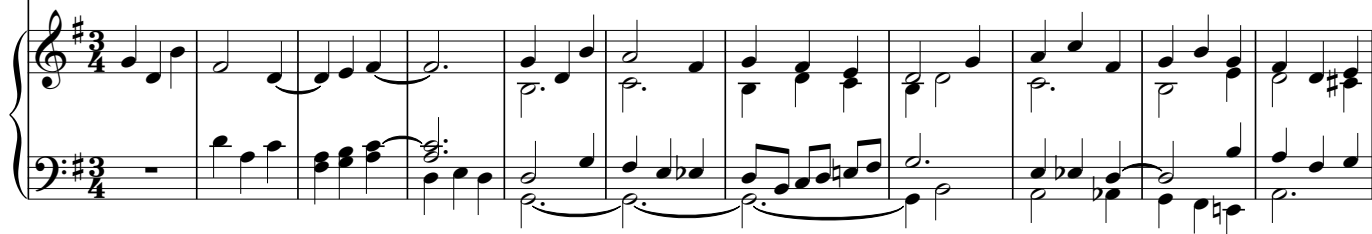
$\text{♩} = 70$

S.



Moderato

$\text{♩} = 70$



12

A.T.

T.B.



22

S.A.



29 **Largo**

A - gnus De - i, qui tol - lis pec-ca-ta mun-di, do - - na no-bis pa - cem.

Largo

do - na no - bis, do - na no-bis pa - cem, do - - na no-bis

43

pa - - cem, do - na no - bis pa - - cem.

do - na no-bis pa - cem.

8^{va}